
GEOGRAPHY

9696/12

Paper 1 Core Physical Geography

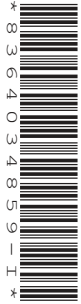
October/November 2019

INSERT

1 hour 30 minutes

READ THESE INSTRUCTIONS FIRST

This Insert contains all the resources referred to in the questions.



This document consists of 4 printed pages.

Table 1.1 for Question 1

Total rainfall and average discharge by month for the Kita River, Japan, 2013

month	J	F	M	A	M	J	J	A	S	O	N	D
total rainfall (mm)	205	100	70	100	50	100	150	120	654	220	200	250
average river discharge (m ³ /s)	12	12	11	6	3	3	4	4	46	15	16	19

Fig. 2.1 for Question 2

Solar radiation absorbed and reflected
by the Earth's surface and reflected by clouds

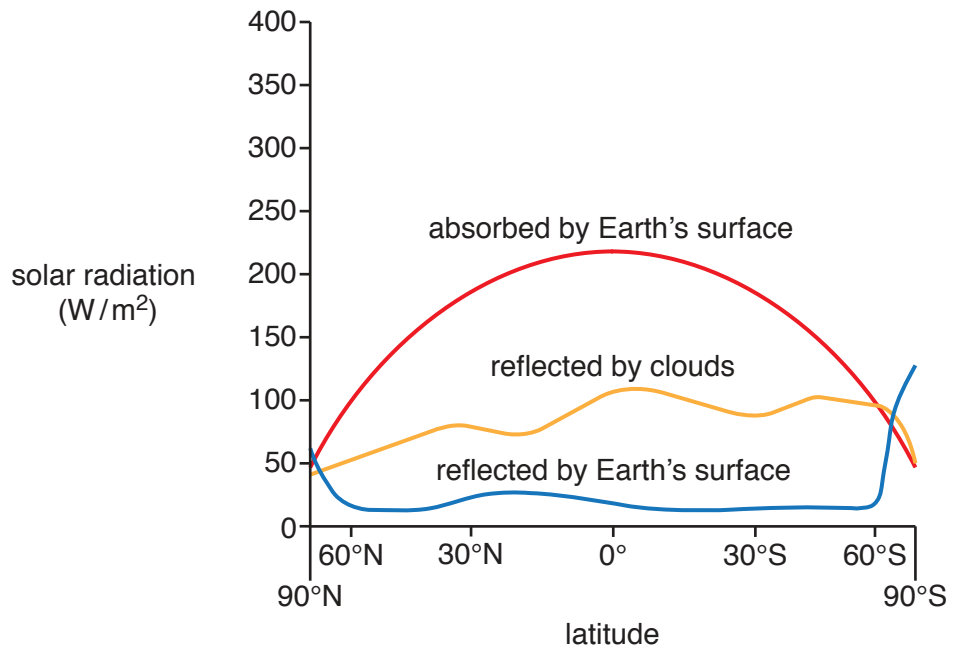
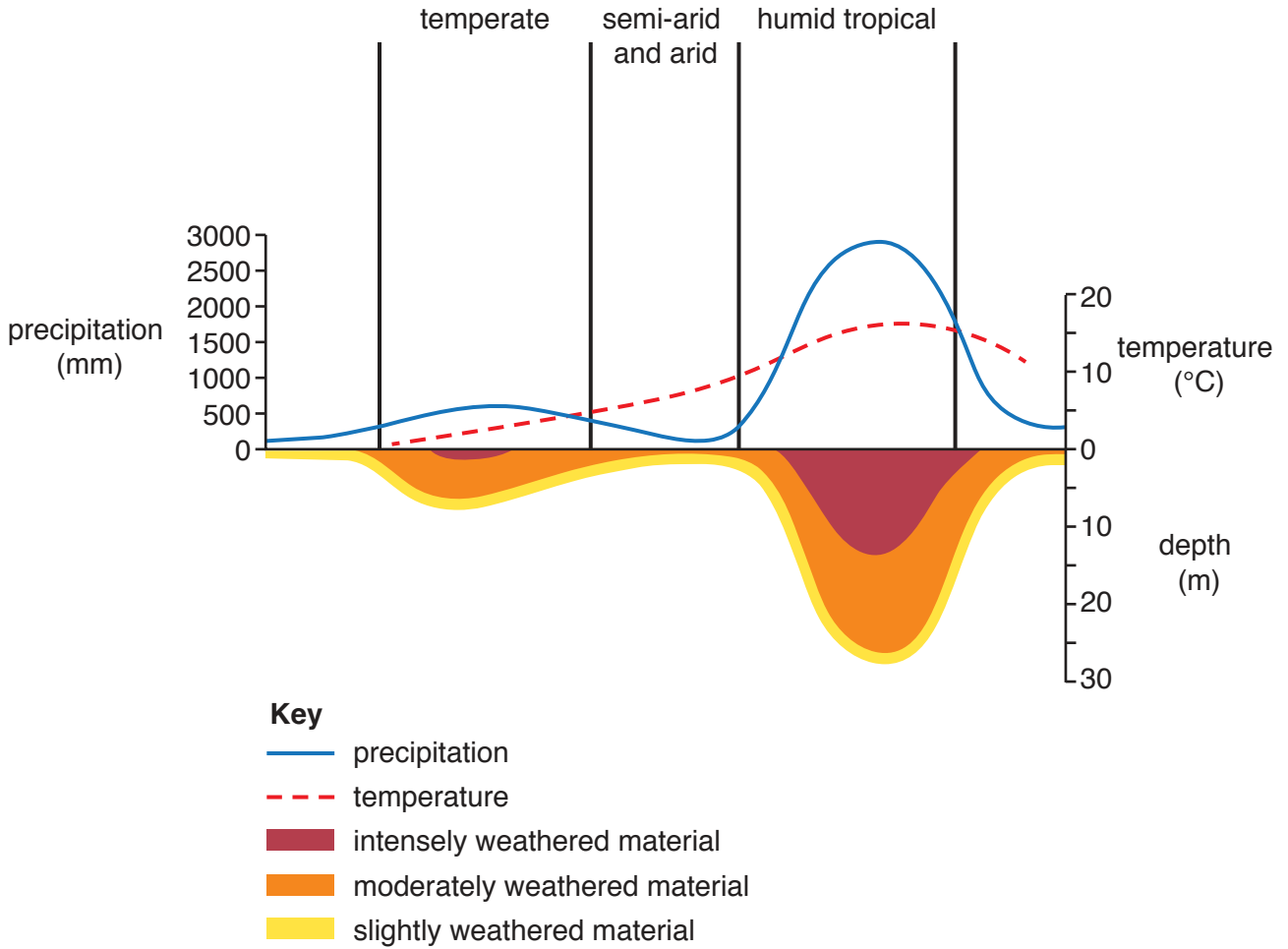


Fig. 3.1 for Question 3

Relationships between precipitation, temperature and weathering



Permission to reproduce items where third-party owned material protected by copyright is included has been sought and cleared where possible. Every reasonable effort has been made by the publisher (UCLES) to trace copyright holders, but if any items requiring clearance have unwittingly been included, the publisher will be pleased to make amends at the earliest possible opportunity.

To avoid the issue of disclosure of answer-related information to candidates, all copyright acknowledgements are reproduced online in the Cambridge Assessment International Education Copyright Acknowledgements Booklet. This is produced for each series of examinations and is freely available to download at www.cambridgeinternational.org after the live examination series.

Cambridge Assessment International Education is part of the Cambridge Assessment Group. Cambridge Assessment is the brand name of the University of Cambridge Local Examinations Syndicate (UCLES), which itself is a department of the University of Cambridge.